

Mergence Domestic CPI + 5% Fund

31 January 2020 - Issued: 21 February 2020



OVERVIEW

Fund Purpose	Generate a real return above inflation whilst minimising medium term risk
Investment Style	Absolute Return
Benchmark	Headline Consumer Price Index + 5%
Investment Vehicle	Segregated
Inception date	August 2006
Number of Months	161
Fund Size	R 1,189 billion
Minimum Investment	R100 million
Management Fee	Subject to mandate (usually between 0.50% and 1.00% per annum)
Performance fees	Negotiable

INVESTOR PROFILE

The Fund is suitable for institutional investors:

- who believe that the risk of monetary loss is more important than the risk of underperforming the equity markets
- who seek a real return above inflation independent of the overall equity market returns
- who seek an investment solution with a strong focus on medium term capital preservation, while aiming to produce significant growth over the long term

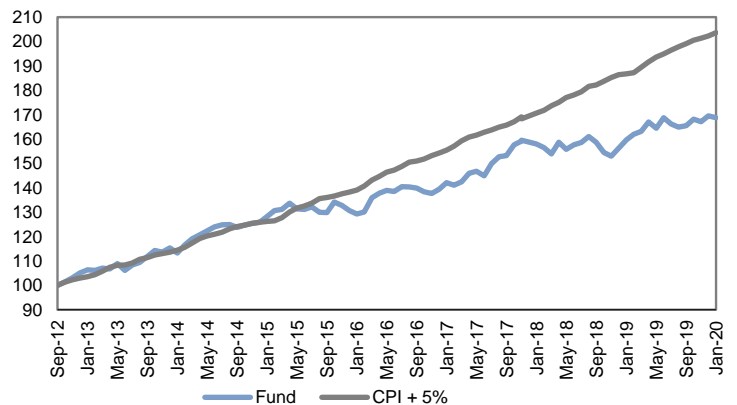
INVESTMENT OBJECTIVE

The Fund is managed with the objective of producing a real return of CPI plus 5% per annum over the longer term while preserving capital over rolling 12-month periods. It may underperform relative to overall equity markets due to its focus on capital preservation and long-term capital growth.

PERFORMANCE DETAILS

Period	Fund	CPI + 5%	ALBI	ALSI
1 Month	-0,47%	0,67%	1,19%	-1,69%
3 Months	0,32%	1,58%	3,30%	-0,27%
6 Months	1,54%	3,72%	4,47%	0,55%
1 Year	5,69%	9,02%	8,48%	7,14%
3 Years (p.a.)	5,88%	9,40%	9,35%	5,32%
5 Years (p.a.)	5,63%	10,04%	6,65%	4,99%
7 Years (p.a.)	6,81%	10,13%	7,21%	8,01%
Since Inception (p.a.)*	8,51%	10,85%	8,79%	11,01%
*Inception: August 2006				
Year	Fund	CPI + 5%		
2020 (YTD)	-0,47%	0,67%		
2019	8,47%	8,56%		
2018	-1,86%	10,18%		
2017	14,17%	9,62%		
2016	6,77%	11,61%		
2015	3,80%	9,77%		
2014	9,13%	10,80%		
2013	9,78%	10,31%		
2012	18,15%	10,61%		
2011	6,53%	11,18%		

7-YEAR TRACK RECORD



INVESTMENT MANDATE

The Fund is managed with an absolute return orientation, and is structured to generate a return of 5% above inflation at a low level of risk. It is broadly diversified across asset classes including equities, listed property, conventional bonds and inflation-linked bonds. The Fund employs active asset allocation and derivative hedging to manage and reduce downside risk.

RISK OF MONETARY LOSS

The recommended investment term for this Fund is 5 years or longer. While the return expectations should be set at periods over 5 years, the Fund has an objective not to lose money over any rolling 12-month period. As a result, declines over any 36-month period are unlikely. Note that while capital preservation is our intent, this is not a guaranteed fund.

RISK ANALYSIS

Risk Measure	Fund
Annualised Return	8,51%
Standard Deviation	5,36%
Sharpe Ratio	0,32
Sortino Ratio	0,65
Maximum Gain	4,50%
Maximum drawdown	-5,50%
Positive Months	62,96%
Highest rolling 1-year return	18,63%
Lowest rolling 1-year return	-4,14%
Beta to JSE All Share	0,32
Correlation to JSE All Share	0,85

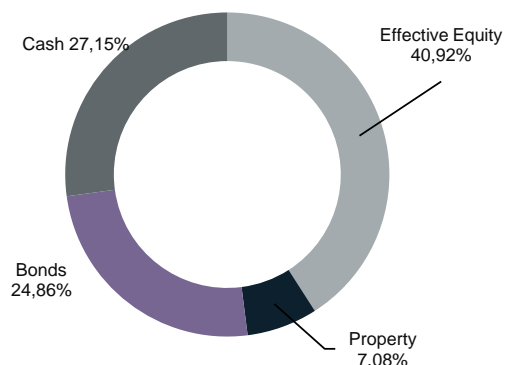
Mergence Domestic CPI + 5% Fund

31 January 2020 - Issued: 21 February 2020



FUND STRUCTURE

Asset Allocation (Effective)



Top 10 Equity Holdings

	% of Category	% of Total
Naspers	16,09	7,00
BHP Billiton	8,50	3,70
Anglo American	7,76	3,38
Richemont	5,54	2,41
Standard Bank	5,29	2,30
FirstRand	4,80	2,09
British American Tobacco	4,37	1,90
Prosus	3,91	1,70
Mondi plc	3,71	1,62
MTN	3,64	1,58

MONTHLY PERFORMANCE RETURNS

	JAN	FEB	MAR	APR	MAY	JUN	JUL	AUG	SEP	OCT	NOV	DEC
2020	-0,47%											
2019	2,14%	1,48%	0,71%	2,39%	-1,54%	2,62%	-1,56%	-0,73%	0,32%	1,64%	-0,65%	1,45%
2018	-0,80%	-0,93%	-1,63%	3,07%	-1,82%	1,21%	0,58%	1,53%	-1,41%	-2,68%	-0,98%	2,16%
2017	1,92%	-0,76%	0,96%	2,54%	0,49%	-1,22%	3,46%	1,82%	0,34%	2,91%	1,19%	-0,21%
2016	-1,07%	0,68%	4,50%	1,35%	0,83%	-0,35%	1,47%	-0,13%	-0,33%	-1,03%	-0,55%	1,33%
2015	1,92%	1,87%	0,37%	1,97%	-1,80%	-0,14%	0,83%	-1,71%	-0,11%	3,36%	-1,08%	-1,58%
2014	-1,79%	2,88%	2,21%	1,39%	1,38%	1,29%	0,63%	0,14%	-0,98%	0,79%	0,54%	0,36%
2013	1,28%	-0,25%	0,91%	-0,35%	2,09%	-2,56%	2,08%	0,97%	2,20%	2,27%	-0,69%	1,54%
2012	2,70%	1,33%	0,39%	1,70%	-0,92%	1,50%	2,03%	1,95%	1,19%	1,51%	1,59%	1,86%
2011	-0,59%	1,23%	-0,15%	2,02%	-0,03%	-0,49%	-0,11%	1,49%	-1,07%	3,27%	1,12%	-0,24%

Please note that there are risks associated with financial products and past performance is not necessarily an indication of future performance.

PORTFOLIO MANAGERS

**Dirk Steyn**, BSc, B Eng and MSc (Financial Mathematics)

Head: Multi-Asset Class

Dirk joined Mergence Investment Managers in 2007 in the role of Quantitative Analyst whilst completing a master's in financial mathematics at the University of Cape Town. Since then he has fulfilled various roles in the investment process including risk manager and fixed income analyst. Since 2015 Dirk has worked in fixed income and cash management at Mergence and is Portfolio Manager in the Absolute Return Funds team. In October 2019 he was appointed to lead the team as Head: Multi-Asset Class.

**Grace Debeila**, B Econ Sc (Actuarial Science)

Co-Portfolio Manager

Grace joined Mergence in September 2019 as Co-Portfolio Manager on the Multi-Asset class funds. She is a seasoned investment professional with a solid 12 year background in the investment industry, primarily in asset management. Before joining Mergence, Grace was employed at Prescient Investment Management as Co-Portfolio Manager on the bond funds, having attained that title in January 2018 after a year of work there as an analyst assisting the portfolio managers and head of fixed income. Her work experience before that includes five years at Prudential Investment Managers as an Asset Allocation Analyst, two years at RMB Asset Management as a Portfolio Risk analyst and 18 months at Momentum Wealth in product development and technical actuarial support roles. Grace has completed 11 of the 15 Actuarial exams required by the Faculty and Institute of Actuaries in the UK with aspirations to complete the full series in future. She is currently pursuing her CFA designation and has completed level II.

Mergence Investment Managers (Pty) Ltd (Mergence), Reg No.2004/021426/07, is a licensed financial services provider under the Financial Advisory and Intermediary Services Act No. 37 of 2002 (FAIS) (FSP No 16134) and is approved by the Registrar of Financial Services Providers (www.fsb.co.za). The availability of a complete list and description of all of the firm's GIPS composites is available upon request. Additional information regarding policies for calculating and reporting returns is available upon request. Though Mergence take care in the accuracy of data, we take no responsibility for any information contained herein or attached. Such information is not intended nor does it constitute financial, tax, legal, investment or other advice, including but not limited to "advice" as defined in FAIS. Mergence does not guarantee the suitability or potential value of any information found in this communication. The user of this communication should consult with a qualified financial advisor before relying on any information found herein and before any decision taking action in reliance thereon. The user of any information should be aware that the market fluctuate and the value of investments and that changes in rates of exchange may have an effect on the value, price or income investments. Therefore it is possible that an investor may not retain the full amount invested. Past performance is not necessarily a guide to future investment performance. Fund performance figures are gross of management fees, net of all applicable withholding & gross of SA capital gains taxes.

Mergence Investment Managers (Pty) Ltd, 2nd floor, Cape Town Cruise Terminal, Duncan Road, V&A Waterfront, Cape Town, South Africa, 8001

P O Box 8275, Roggebaai, 8012 / T: +27 21 433 2960 / F: +27 433 0675 / E: info@mergence.co.za