

Fund Fact Sheet

Mergence Renewable Energy Debt Fund I

30 September 2023 - Issued: 12 October 2023



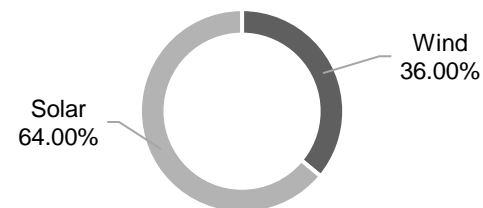
OVERVIEW

Risk Profile	
Current asset value	R 415 million
Undrawn capital	R0.00
Fund Purpose	Maximise long-term income generation while promoting renewable energy assets.
Sector	South African Renewable Energy Assets
Asset Class	Fixed & variable rate debt instruments
Benchmark Return	3-month JIBAR + 3% (net)
Launch Date	April 2013
Fund Structure	Closed-end
Fund Maturity Date	30 September 2029
Commitment Period	24 months from Launch Date
Management Fee	Subject to mandate (usually between 0.55% and 0,75% per annum, excl VAT)

FUND COMPOSITION

The Mergence Renewable Energy Debt Fund invests in feasible renewable energy generation projects based on proven technology. Investments are made in debt instruments underpinned by electricity generation assets with power purchase agreements in place. Repayments from the generation asset earnings are passed through to the investor. Investments take place through renewable energy project companies to maximise profit and isolate specific risks. The Fund aims to invest in projects which are structured to deliver socio-economic targets in excess of the minimum thresholds, therefore taking into account local content, local procurement, local ownership and job creation.

TECHNOLOGY ALLOCATION



INVESTOR PROFILE

The Fund is suitable for institutional investors:

- who seek exposure through supporting developmental investing in terms of social and environmental criteria;
- who are comfortable with the inherent volatility of the financial markets, and who acknowledge that the effects of impact investing occur over medium to long term time horizons.

PERFORMANCE COMMENTARY

The Fund has invested in 11 renewable energy projects located in 4 South African provinces. All current renewable energy project investments yield gross returns above the benchmark return of Jibar + 3%. In addition to achieving the gross returns, the Fund has invested in projects that demonstrate higher than threshold economic development indications including community ownership and local content. As of the end of Q12015, all of the eleven investments within the portfolio have been completed, commissioned and are selling electricity successfully into the grid.

IMPACT OBJECTIVE

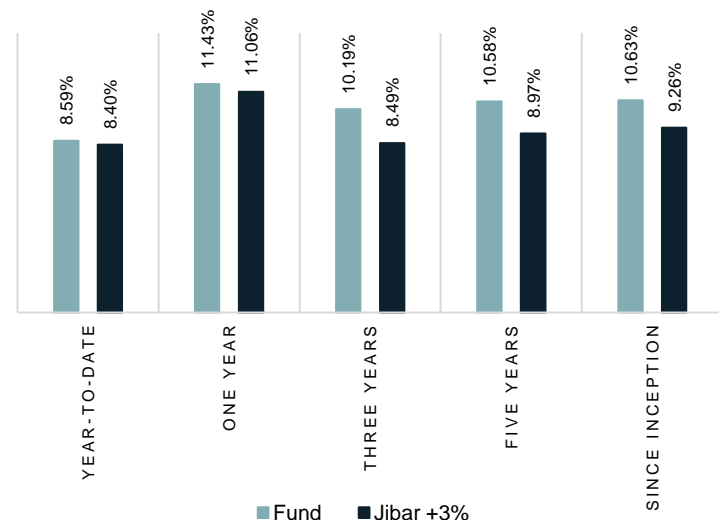
The Fund aims to invest in projects which are structured to deliver socio-economic targets in excess of the minimum thresholds, therefore taking into account local content, local procurement and local ownership and job creation.

INVESTMENT OBJECTIVE

The Mergence Renewable Energy Debt Fund is a Development Impact Fund which seeks to provide commercially viable investments into the renewable energy sector enabling investors to achieve targeted investment returns together with social and environmental impact. This Fund invests primarily in the construction, commissioning and operation of renewable energy projects within South Africa, and aims to achieve the maximum risk-adjusted return possible from this asset class. The Fund only invests in the senior debt of viable renewable energy projects. Our Investment approach includes:

- Strong fundamentals;
- Diversification across technologies; and
- Well-regarded advisory committee with strong track record.

PERFORMANCE SUMMARY



Fund Fact Sheet

Mergence Renewable Energy Debt Fund I

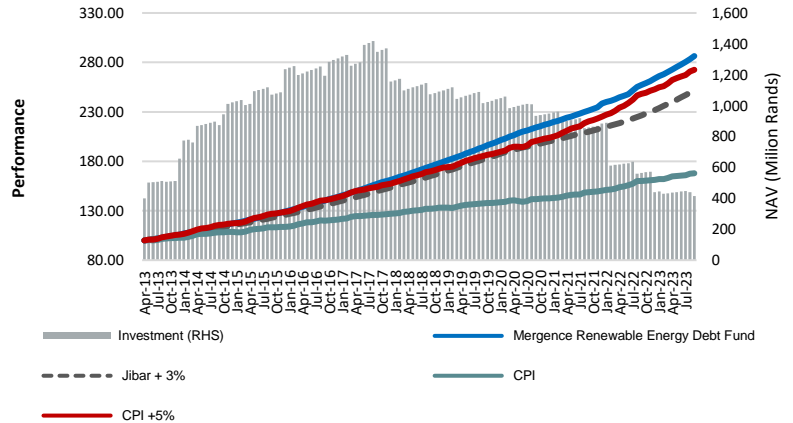
30 September 2023 - Issued: 12 October 2023



GEOGRAPHIC ALLOCATION



FUND GROWTH



SOLAR AND WIND PROJECTS



PORTFOLIO MANAGER



Kasief Isaacs, BCom Hons, CA (SA)
Head: Private Markets

Kasief joined Mergence in 2015. He has over 17 years of experience in the financial services industry. As Senior Investment Principal he has a specific focus on energy, infrastructure, and impact within SA and SADC. He leads the Private Markets investment team which has built up a stellar performance record over the past decade. Kasief has prior extensive international and local experience in SA's renewable energy market. He is an experienced conference speaker and media commentator.



Chitongwa Siame, BSc Hons, ACCA, MCom (Fin Mngmt)
Investment Principal

Chito joined Mergence in 2011 as Equity Analyst in the Public Markets investment team focused on FMCG, hospitality, financial services, and telecommunications before transitioning to the Private Markets investment team in 2015. As Investment Principal, Chito focuses on Private Market investment opportunities within SADC. He has led transactions in the aquaculture and microfinancing sectors and serves on the boards of several investee companies.

ADVISORY COMMITTEE

Dr Grové Steyn	SA	Infrastructure Economist
Clay Norrbom	USA	Renewable Energy Fund Mngr
Gerhard Kemp	SA	Project Financier
Buddy Buruku	Ghana	Renewable Energy Consulting
Bob Assenberg	NL	Renewable Energy Fund Mngr

THE TEAM

Mergence Investment Managers (Pty) Ltd (Mergence), Reg No.2004/021426/07, is a licensed financial services provider under the Financial Advisory and Intermediary Services Act No. 37 of 2002 (FAIS) (FSP No 16134) and is approved by the Registrar of Financial Services Providers (www.fsb.co.za). The availability of a complete list and description of all of the firm's GIPS composites is available upon request. Additional information regarding policies for calculating and reporting returns is available upon request. Though Mergence take care in the accuracy of data, we take no responsibility for any information contained herein or attached. Such information is not intended nor does it constitute financial, tax, legal, investment or other advice, including but not limited to "advice" as defined in FAIS. Mergence does not guarantee the suitability or potential value of any information found in this communication. The user of this communication should consult with a qualified financial advisor before relying on any information found herein and before any decision taking action in reliance thereon. The user of any information should be aware that the market fluctuate and the value of investments and that changes in rates of exchange may have an effect on the value, price or income investments. Therefore it is possible that an investor may not retain the full amount invested. Past performance is not necessarily a guide to future investment performance. Fund